

Traffic— design Konstantin Grcic, 2013/2014



Soft, geometrical volumes, with fabric or leather covering, supported on slender, metallised painted metal rod frames: this is the starting point from which Traffic developed. This complete collection of upholstery combines simplicity with refinement, and uses colour as a multifarious and expressive language. Playing on different proportions, the basic concept of Traffic is elaborated in a number of different forms: an armchair, a two-seater and three-seater

sofa, a bench in two versions, a chaise longue and an island. The collection has expanded further to include two low tables, one large, one small, and a high table, again with a metal rod frame, but with a top in artificial stone, adding another tactile sensation to the home and contract scenario.



Designer in Magis

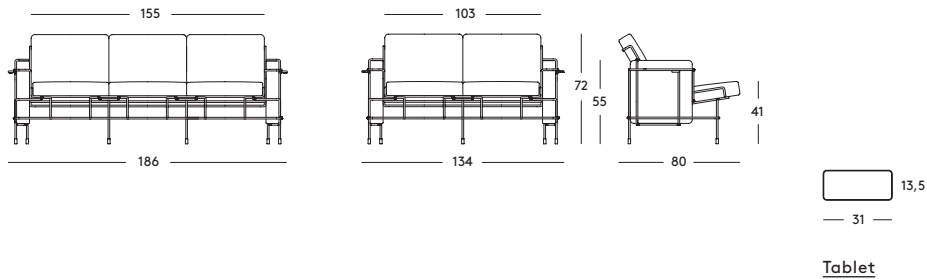


Traffic— design Konstantin Grcic, 2013/2014
Technical Sheet

Sofa

Material: frame in steel rod, painted in polyester powder or cataphoretically-treated and painted in polyester powder. Cushions in expanded polyurethane with removable cover in fabric (Kvadrat "Steelcut Trio" or Polyhedra for outdoors) or in leather. Tablet in acrylic stone also available. Versions for outdoor use available.

Magis logo is stamped on each product of our collection vouching for their originality.



FATIGUE, LOAD AND IMPACT TESTS

- ANSI-BIFMA X5.4-2012
- Drop test EN 1728:2012
- Arm sideways static load test EN 1728:2012
- Seat and back static load test EN 1728:2012
- Leg forward static load test EN 1728:2012
- Leg sideways static load test EN 1728:2012
- Arm downwards static load test EN1728:2012
- Seat front edge durability test EN 1728:2012
- Arm fatigue test EN 1728:2012
- Combined seat and back fatigue test EN 1728:2012
- Non-domestic seating. Vertical load on back rest EN 1728:2012
- Non-domestic seating. Information for use EN 16139:2013
- Non-domestic seating. Safety requirements EN 16139:2013
- Stability EN 1022:2005
- Arm rest impact test EN 1728:2012
- Seat impact test EN 1728:2012
- Back impact test EN 1728:2012



magisdesign.com

Traffic— design Konstantin Grcic, 2013/2014
Finishes



Frame: White 5011
 Fabric: Turquoise F-227
 Tablet: White
*Chaise longue and Platform
 not for outdoor*



Frame: White 5011
 Fabric: Blue F-257
 Tablet: White
*Chaise longue and Platform
 not for outdoor*



Frame: White 5011
 Fabric: White F-737
 Tablet: White
*Chaise longue and Platform
 not for outdoor*



Frame: White 5011
 Fabric: Black F-769
 Tablet: White
*Chaise longue and Platform
 not for outdoor*



Frame: White 5011
 Fabric: Orange F-088 (533)
 Tablet: White



Frame: White 5011
 Fabric: Light Blue F-222
 (983)
 Tablet: White



Frame: White 5011
 Fabric: Beige F-266 (205)
 Tablet: White



Frame: White 5011
 Fabric: Green F-354 (953)
 Tablet: White



Frame: White 5011
 Fabric: Yellow F-578 (453)
 Tablet: White



Frame: White 5011
 Fabric: Light Grey F-741
 (133)
 Tablet: White



Frame: White 5011
 Leather: Brown L-0111
 Tablet: White



Frame: White 5011
 Leather: Cream White
 L-0706
 Tablet: White



Frame: Black 5013
 Fabric: Dark Brown F-521
 (383)
 Tablet: Anthracite Grey



Frame: Black 5013
 Leather: Anthracite Grey
 L-0060
 Tablet: Anthracite Grey



Frame: Mahogany Brown
 5015
 Fabric: Brown F-530 (353)
 Tablet: Dark Green



Frame: Mahogany Brown
 5015
 Leather: Brown L-0111
 Tablet: Dark Green



Frame: Mahogany Brown
 5015
 Leather: Dark Brown L-0752
 Tablet: Dark Green



Frame: Sepia Brown 5016
 Fabric: Yellow F-578 (453)
 Tablet: Anthracite Grey



Frame: Sepia Brown 5016
 Leather: Brown L-0111
 Tablet: Anthracite Grey



Frame: Sepia Brown 5016
 Leather: Dark Brown L-0752
 Tablet: Anthracite Grey



Frame: Dark Green 5021
 Fabric: Green F-354 (953)
 Tablet: Dark Green



Frame: Dark Green 5021
 Leather: Brown L-0111
 Tablet: Dark Green



Frame: Dark Green 5021
 Leather: Dark Brown L-0752
 Tablet: Dark Green



Frame: Green Blue 5017
 Fabric: Light Blue F-222
 (983)
 Tablet: White



Frame: Signal Red 5019
 Fabric: Orange F-088 (533)
 Tablet: Anthracite Grey

The Kvadrat colour numbers are indicated in brackets next to the Magis inner colour number. The information included in this product sheet are based on the last data in our current pricelist. Magis reserves the right to modify the products without notice.

Designer



Konstantin Grcic

Konstantin Grcic was born in 1965 and studied Design at the Royal College of Art in London. Since setting up his own practice, Konstantin Grcic Industrial Design (KGID), in Munich in 1991, he has developed furniture, products and lighting for some of the leading companies in the design field. Konstantin Grcic defines function in human terms, combining strict forms with considerable mental acuity and humour. Each of his products expresses a careful research into the history of design and architecture, and his passion for technology and materials. Known for his pared-down pieces, Grcic is often called a minimalist, but the designer himself prefers to speak of simplicity.

