



GAZZDA

---

# Loop Side Table

Product sheet

design by  
**Mustafa Čohadžić**



# Loop Side Table

## Product facts

### Materials

---

Plate	Oak veneer / Linoleum
Wood finish	Lacquered
Metal	Powder-coated steel

### Technical features

---

#### Plate

The table plate is made out of oak veneer (available in natural or black colour lacquered options) or linoleum (natural, warm to the touch, smooth, antibacterial surface material, available in Nero and Mushroom colours). Both top surface options - oak veneer and linoleum, are glued on the birch plywood core.

#### Wood finish

Available in two lacquer finishes (colours): as a Natural lacquer which retain the wood's natural state, and and Black lacquer, which gives the oak a uniform and sleek appearance, while preserving the natural look and texture of the wood.

#### Metal base

Steel base has a powder-coated and fine structure granulated surface finish available in two colours, as Black RAL 9005 or Mushroom RAL 1013 color options.

#### Cleaning

Please see [Product](#) or [Material](#) page on our website.

### Notes to consider

---

#### Load capacity

The maximum load capacity of the product is 3 kg.

#### Handling note

The metal construction should be used when picking up the assembled product from the ground. Picking up the product by table plate may cause product damage.

#### Variations

Natural variations in wood color and surface may occur. Regular maintenance will ensure the wood preserves its authentic beauty and can last for generations.

#### Product changes

Please note that Gazzda reserves the right to alter construction and design without notice.

#### Dimensions (tolerances)

The dimensions shown are indicative, they may vary due to the natural properties of wood, season, or manufacturing processes. Deviations from the specified size may occur, usually no more than 1 cm.

For all additional inquiries regarding Loop Side Table please feel free to [contact us](#).

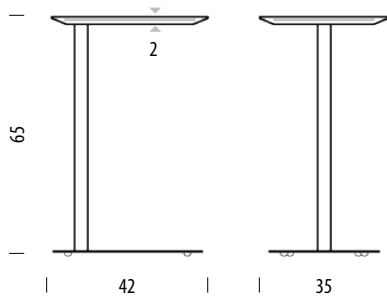
# Loop Side Table

Plate Oak veneer / Linoleum, Base Powder-coated steel

Version: 13-12-2022

## Basic info

<b>Design</b>	Mustafa Čohadžić
<b>Product size</b>	W: 42, D: 35, H: 65
<b>Packaging</b>	W: 62, D: 42, H: 17
<b>Volume</b>	0,045 m <sup>3</sup>
<b>Net weight</b>	8,3 kg
<b>Gross weight</b>	11,3 kg



## Item no. 503

Revolving plate • Assembly 5 min / 1 person

Plate	Thickness (cm)
	2

## Selected options

### Oak veneer plate



Lacquered  
LUA468  
Natural



Lacquered  
RAL 9005  
Black

### Linoleum plate



Linoleum  
4176  
Mushroom



Linoleum  
4023  
Nero

### Metal finish



RAL 1013  
Mushroom



RAL 9005  
Black

Indicated materials and colours are selected by Gazzda as best-selling items. Please consult the current price list or our customer service for the lead time of selected options.

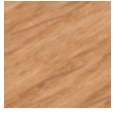
# Loop Side Table

## Available materials

Version: 13-12-2022

### Plate | Oak veneer

---



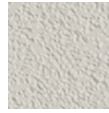
Lacquered  
LUA468  
Natural



Lacquered  
RAL 9005  
Black

### Metal base | Powder-coated steel

---



Mushroom  
RAL 1013



Black  
RAL 9005

### Plate | Desktop linoleum - by Forbo

---



4176  
Mushroom



4023  
Nero

### Note

Desktop linoleum colors are chosen to go in line with powder coated metal base: Linoleum Nero with Black RAL 9005 and Mushroom linoleum Mushroom RAL 1013.