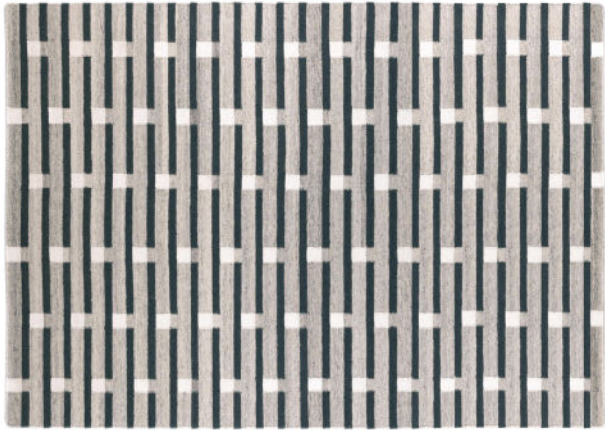


Purlin Rug by Eleanor Pritchard





Purlin Rug by Eleanor Pritchard

Designed in London and handwoven in India the Purlin Rug features designer Eleanor Pritchard's intricate graphic patterns inspired by London's architectural skyline and draws its name from vernacular architectural roofing structures.

The Purlin design is a pattern of long narrow bars and alternating square blocks arranged in a half-drop repeat pattern resulting in a clean linear design with a pared back feel. With a colour palette based on warm and dark greys, sea greens and petrol blues, the Eleanor Pritchard rug collection beautifully encapsulates the metropolitan aesthetic of London.

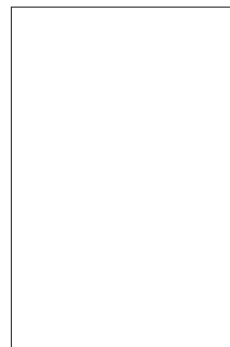
Available in three sizes, two colours and the option of a hand-tufted or a flatweave design. Please note the runner is only available in flatweave.

Made in India.

Technical / Construction

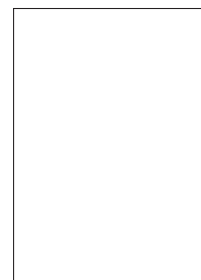
60% New Zealand wool
40% Indian wool

Dimensions



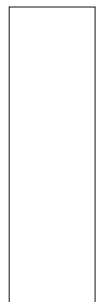
Large Rug

H3000 W2000
H118" W78.7"



Medium Rug

H2400 W1700
H94.4" W67"

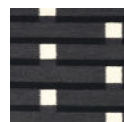


Runner

H2500 W800
H98.4" W31.4"

Available Finishes

rPet



Flannel
Grey

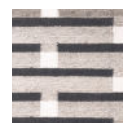


Warm
Grey

HTC



Flannel
Grey



Warm
Grey