

Spindle Rug by Eleanor Pritchard





Spindle Rug by Eleanor Pritchard

Designed in London by Eleanor Pritchard and handwoven in India, the Spindle Rug features a large scale pattern of repeating thick and thin blocks centre-scored with a fine accent line.

The pattern has a pleasing simplicity and references architectural detailing as well as the vertical line of yarn on a drop spindle.

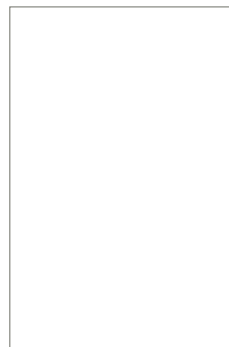
Available in two sizes in a flatweave design.

Technical / Construction

60% New Zealand Wool

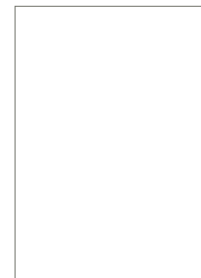
40% Indian Wool

Dimensions



LARGE RUG

H3000 W2000
H118"W78.7"

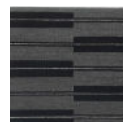


MEDIUM RUG

H2400 W1700
H94.4"W67"

Available Finishes

FLATWEAVE



Flannel
Grey



Warm
Grey