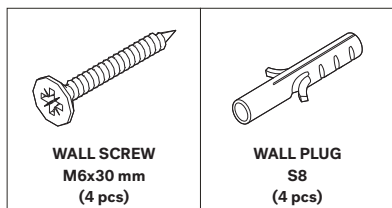
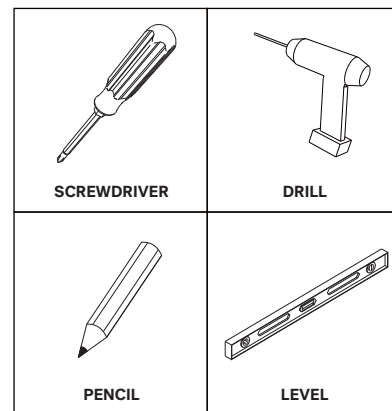


## POLISHED IMPERFECT WALL HANGER ASSEMBLY INSTRUCTIONS FOR WALL HANGER INSTALLATION

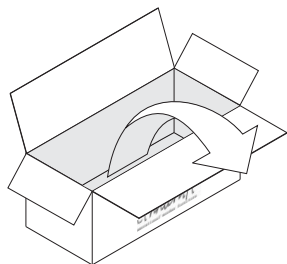
### HARDWARE ENCLOSED



### TOOLS (Not included in Packaged)



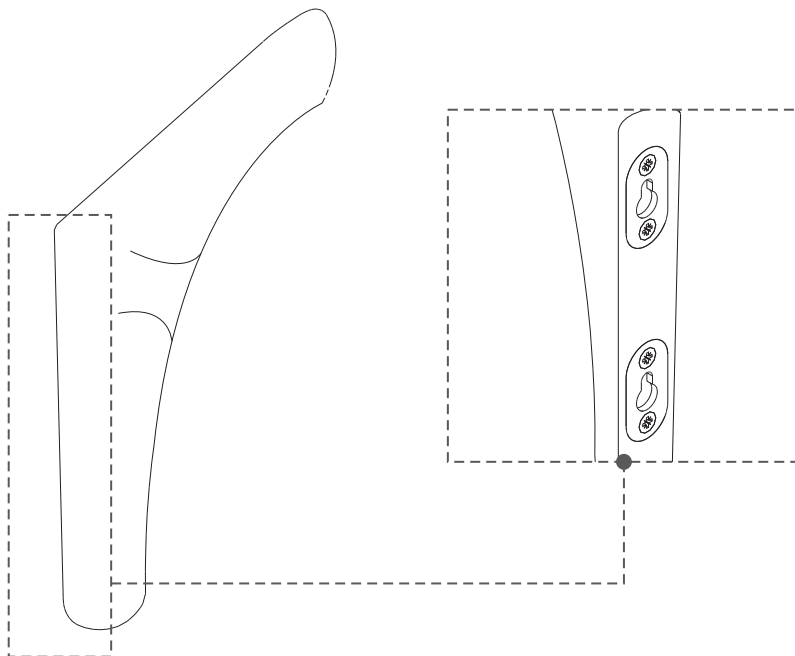
**!** WALL MATERIALS VARY.  
FOR ADVICE ON SUITABLE SCREW SYSTEMS,  
CONTACT YOUR LOCAL SPECIALISED DEALER.



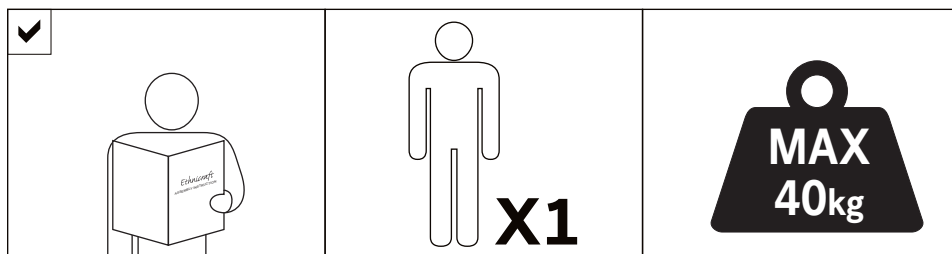
### IN YOUR PACKAGE :

ASSEMBLY INSTRUCTION  
HARDWARE (AS LISTED ABOVE)

PARTS TO BE INSTALLED  
WALL HANGER 1 set (2 pcs)



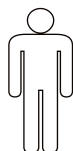
### NOTICE



### SYMBOLS



DIRECTION



NUMBER OF  
PERSONS NEEDED



USE HAND



USE DRILL



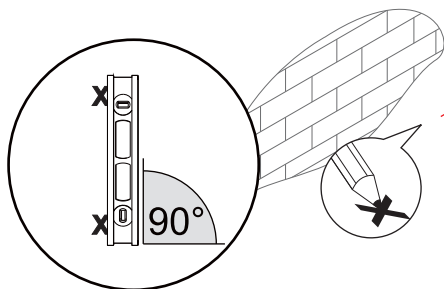
USE SCREWDRIVER  
TO TIGHTEN



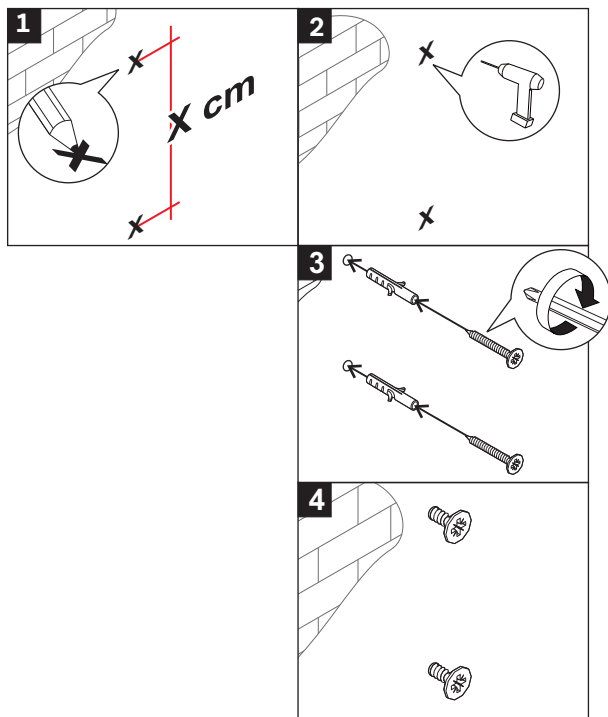
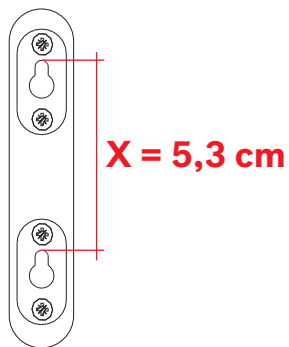
USE PENCIL

## POLISHED IMPERFECT WALL HANGER ASSEMBLY INSTRUCTIONS FOR WALL HANGER INSTALLATION

### 1 INSTALLING WALL SCREWS



**USE LEVEL FOR ALIGNMENT**



**LEAVE THE SCREW LENGTH ± 6mm FROM THE WALL**

### 2 INSTALLING WALL HANGER

