

## assembly instructions 09/2021

### TOOLS:

Allen key SW4 and SW5 (enclosed), crosstip screwdriver

12x XS steel bolts



2x countersunk screws (5x60)



12x connector housings



2x countersunk screws (5x80)



12x grub screws



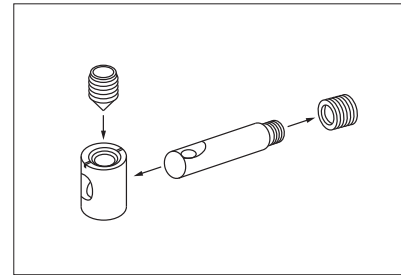
2x center feet (13/17 cm), adjustable

1x countersunk bolt (M8x50)



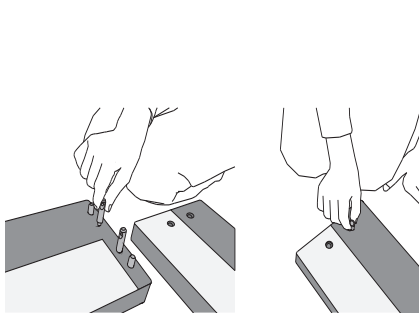
2x spacer blocks

24x confirmat screws

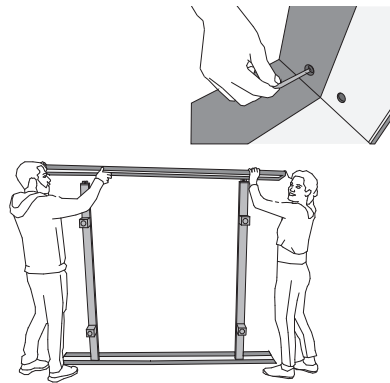


Video:  
<https://www.youtube.com/watch?v=ioLUTDqtgE>

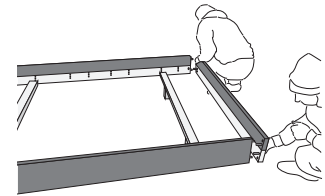
Please assemble the bed **on a soft surface (e.g. a carpet or blanket)** to avoid damages.



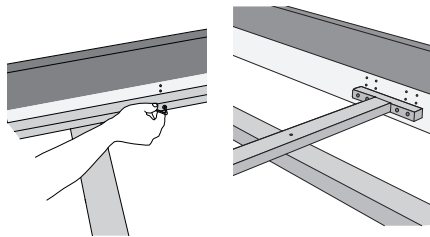
**1.** Insert connector housings and screw steel bolts into side rails, crossbars, head and footboards. Align bolts and housings correctly!



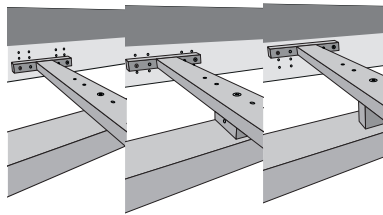
**2.** Mount the bed feet to the crossbar. Attach the crossbars to one of the side rails. Fix the connection with grub screws. Mount the second side rail the same way.



**3.** Fix head and footboards.

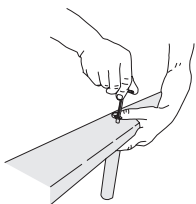


**4.** Choose a position for the mattress supports. Fix the side supports and the center rail using confirmat screws.

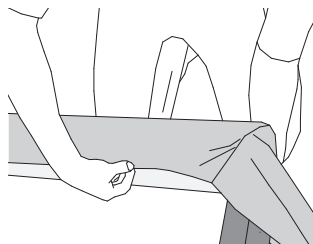


without spacer block: insertion depth 14,5 cm  
horizontal spacer block: insertion depth 12,5 cm  
vertical spacer block: insertion depth 10,5 cm

**5.** Use the countersunk screws in the correct length (5x60/80) to fix the spacer block.



**6.** Choose the correct center feet and connect it to the center rail with the countersunk screw (M8x50).



**7.** Place the cover at one corner and fix it with the hook-and-loop fastener. Afterwards place the cover around the whole bed frame and fix it with the hook-and-loop-fastener from the corners to the middle of the bed.

