

Rar

Uncomplicated comfort



normann

C O P E N H A G E N

An uncomplicated, familiar sofa design

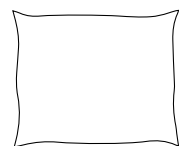
With its easy-to-like silhouette and impeccable comfort, Rar is an uncomplicated sofa collection that will adapt seamlessly to many interiors and tastes. Capturing the essence of its inviting nature, Rar takes its name from the Danish word for pleasant. Comprising an armchair, a 2-seater sofa, and a spacious 3-seater sofa, this collection embodies a humble design language that seamlessly integrates into any space.



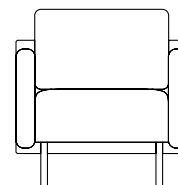
normann

C O P E N H A G E N

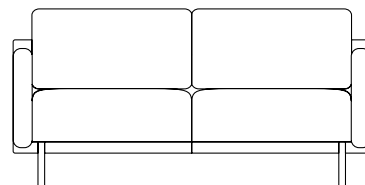
Collection Overview



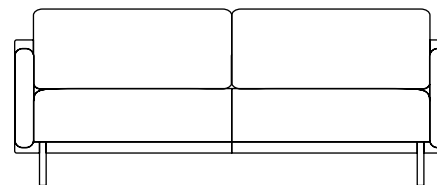
Rar Cushions
H: 50 x L: 50 cm



Rar Armchair
H: 81 x L: 79 x D: 87 x SH: 45,5 cm



Rar Sofa 2-Seater
H: 81 x L: 170,5 x D: 87 x SH: 45,5 cm



Rar Sofa 3-Seater
H: 81 x L: 204 x D: 87 x SH: 45,5 cm



Product Facts

Description

The Rar collection takes its name from the Danish word for pleasant, alluding to its soft and comfortable seat and uncomplicated expression. The collection comprises an armchair, a 2 seater sofa and a 3 seater sofa, all with the same simplistic, timeless design language. Rar is crafted from PU foam with a wooden reinforcement structure inside and powder-coated steel legs and comes in two different textiles and one leather option.

Designer / Year Of Design

Simon Legald / 2023

Material

Frame: Combination of pine and chipboard

Upholstery: Textile or Leather

Filling: PU Foam

Legs: Powder-coated steel

Construction

The Rar Collection is made of high-quality PU foam with a wooden reinforcement structure inside.

The legs are made from powder-coated steel. The collection comprises an armchair, a 2 seater sofa, and a 3 seater sofa, all with the same simplistic, timeless design language. Textile or leather upholstery.

Maintenance

Textile: Clean with textile or upholstery cleaner.

Leather: Clean with a damp cloth. Use warm water with soap flakes. Frequent vacuuming with a soft fitting is recommended for both textile and leather to preserve color and appearance.

normann

C O P E N H A G E N

Material Options

Color (Sofas)



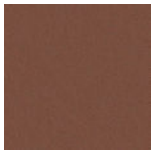
Composition 60% Recycled Polyethylen, 40% Polyester
Martindale 100.000
Fastness to light 4-5
Pilling 4

Re-Born
Dark Grey



Composition 62% Polyester, 17% Cotton, 14% Viscose, 7% Linen
Martindale 40.000
Fastness to light 5
Pilling 4

Venezia
Off-White



Leather thickness 0,9 - 1,1 mm
Stain / Maintenance 6
Leather type corrected

Omaha
Cognac

Color (Cushions)



Composition 60% Recycled Polyethylen, 40% Polyester
Martindale 100.000
Fastness to light 4-5
Pilling 4

Re-Born
Dark Grey



Composition 62% Polyester, 17% Cotton, 14% Viscose, 7% Linen
Martindale 40.000
Fastness to light 5
Pilling 4

Venezia
Off-White

Contact

Normann Copenhagen

Niels Hemmingsens Gade 12, 1153 Copenhagen, Denmark
normann@normann-copenhagen.com
+45 35 55 44 59

normann
C O P E N H A G E N