

## Multi-Lite Pendant, EU

Louis Weisdorf - 1972



| ITEM NUMBER |   |          |
|-------------|---|----------|
|             | Multi-Lite Pendant (Base: Brass, Shade: Shiny Brass)          | 10014449 |
|             | Multi-Lite Pendant (Base: Brass, Shade: Soft Black Semi matt) | 10014446 |
|             | Multi-Lite Pendant (Base: Brass, Shade: Rose Dust Semi matt)  | 10014447 |
|             | Multi-Lite Pendant (Base: Chrome, Shade: White Semi matt)     | 10014458 |
|             | Multi-Lite Pendant (Base: Chrome, Shade: Chrome)              | 10014459 |
|             | Multi-Lite Pendant (Base: Brass, Shade: White Semi matt)      | 10014448 |
|             | Multi-Lite Pendant (Base: Brass, Shade: Midnight Blue)        | 10073809 |
|             | Multi-Lite Pendant (Base: Brass, Shade: Nordic Blue matt)     | 10014450 |
|             | Multi-Lite Pendant (Base: Brass, Shade: Sea Grey Semi matt)   | 10014451 |
|             | Multi-Lite Pendant (Base: Black Brass, Shade: Black Brass)    | 10072250 |
|             | Multi-Lite Pendant (Base: Chrome, Shade: Black Semi matt)     | 10014460 |

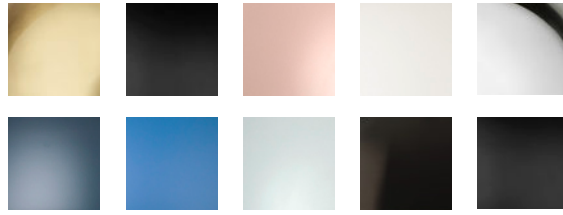
### DESCRIPTION

Louis Weisdorf's contemporary and classic design philosophy is echoed in the Multi-Lite Floor Lamp. With its timeless elegance, distinctive style and unique multi-functionality, the Multi-Lite Floor Lamp brings life and character to any interior space. The Multi-Lite lamp design is created in 1972 by the Danish architect Louis Weisdorf with the aim of reflecting his passion for diversity. Due to its unique design, the two opposing outside shades can individually be rotated and transformed into multiple combinations and encourage for personal installations and expressions whenever desired. Always with Weisdorf's design philosophy in mind, the light can be directed upwards, downwards or exude an asymmetric art light without exposing the light source.

## Materials & Finishes

### SHADE FINISH

Shiny Brass, Soft Black Semi matt, Rose Dust semi matt, White Semi matt, Chrome, Midnight Blue, Nordic Blue matt, Sea grey semi matt, Black Brass, Black semi matt



### BASE FINISH

Chrome, Brass, Black Brass



### CORD SHAPE

Round

### CORD COLOUR

Black textile

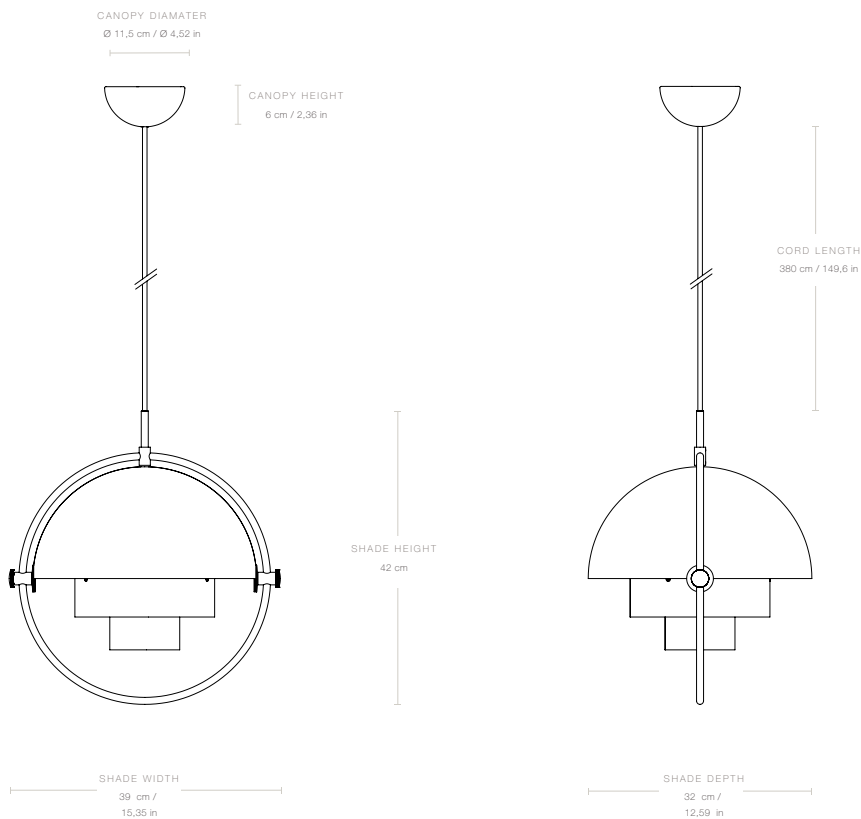
### MATERIALS

Steel (Shade) Aluminum (Canopy)

### CORD LENGTH

380 cm

## Dimensions



|                 |          |
|-----------------|----------|
| LAMP DEPTH      | 32 cm    |
| LAMP HEIGHT     | 42 cm    |
| CANOPY HEIGHT   | 6 cm     |
| CANOPY DIAMETER | Ø11,5 cm |
| SHADE DIAMETER  | Ø32 cm   |
| SHADE HEIGHT    | 42 cm    |
| CORD LENGTH     | 380 cm   |

---

## Weight

|              |         |
|--------------|---------|
| TOTAL WEIGHT | 2,79 kg |
|--------------|---------|

---

## Packaging

|                   |         |
|-------------------|---------|
| NUMBER OF PARCELS | 1       |
| PACKAGING LENGTH  | 37 cm   |
| PACKAGING WIDTH   | 37 cm   |
| PACKAGING HEIGHT  | 51 cm   |
| PACKAGING WEIGHT  | 1,69 kg |
| GROSS WEIGHT      | 4,48 kg |

---

## Electrical Specifications

|                  |                                 |
|------------------|---------------------------------|
| BULB SOCKET      | E27                             |
| RECOMMENDED BULB | 810 Lumen (6W-10W LED Dimmable) |
| VOLTAGE          | 240v                            |
| BULB INCLUDED    | No                              |
| PLUG TYPE        | EU - Type C, 2 PIN              |

---

## Test & Certifications

|                   |   |
|-------------------|---|
| CERTIFICATION     |    |
| ISOLATION CLASS   | II  |
| IP CLASSIFICATION | 20  |

SUSTAINABILITY

Parts can be separated and sorted for recycling

---

KEY FEATURES

Adjustable quarter-sphere shades