

Spine Wood Barstool

Designed By Space Copenhagen, 2011

Spine is a series of chairs and barstools designed with a great attention to materiality, and a mixture of both classic and unorthodox design details. With a dynamic look, the series evolves around a straight seat, designed to bridge the comfort of a fine dining chair, with the openness and social invitation offered by a traditional barstool.

MODEL

1731 - Front upholstered

MATERIALS

Barstool with legs of solid wood with powder coated aluminum stretcher. Seat shell of plywood with beech core. Front side of seat shell is upholstered with CMHR or HR foam and covered in fabric or leather, finished with piping. Please specify counter- or bar height.

COUNTRY OF ORIGIN

DK

FABRIC- & LEATHER CONSUMPTION

Fabric: 0,6 m

Leather: 0,96 m²

TEST & CERTIFICATES

FSC® certified

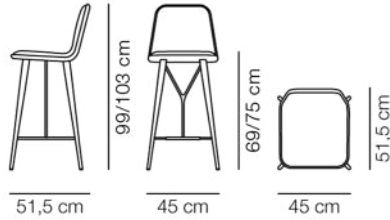
EN 1022:2005, EN 16139:2013 (L1)



ESSENTIAL ASSORTMENT

UPHOLSTERY	WOOD	SEAT HEIGHT
Leather Omni 112, Warm grey	Smoked oak stained lacq. -black metal, FSC Mix 70%	74 cm
Leather Vice 11, Black	Ash, black lacquer - black metal, FSC MIX 70%	74 cm
Leather Trace 8680, Heritage brown	Ash, black lacquer - black metal, FSC MIX 70%	74 cm
Hallingdal 200	Oak lacquer - black metal, FSC Mix 70%	74 cm

DIMENSIONS



Weight: 10,2 kg

PACKAGING INFORMATION

L: 57 cm, W: 53 cm, H: 109/120 cm,

Cbm: 0,34m³

13,3 kg

CARE & MAINTENANCE

Our Care & Maintenance offers guidance for best maintenance of our furniture. It includes advice and instructions on cleaning and caring for specific materials to ensure a long life of your furniture. Find your product on our product site and navigate to the Product Care menu:

[Link to Cleaning & Maintenance](#)

SUSTAINABILITY

Fredericia's furniture is intended to be passed on from generation to generation. The core values of good design are rooted in the sense of responsibility and use of natural materials, ethical methods of production and respect for the people using our furniture every day.

Transparency, sustainability, and circularity are essential, and with a growing number of certifications and ambitious initiatives, Fredericia takes pride in continuously improving its performance while facilitating sustainable customer choices. Download our Sustainability report, Fredericia for People & Planet, here:

[Fredericia for People & Planet](#)

Environmental Product Sheet available here: [Link to EPS](#)

WARRANTY

Fredericia Furniture A/S offers a 7-year guarantee against manufacturing defects in standard products (materials and construction). The warranty does not cover wear and damage to covers, surface treatment, inappropriate use and the like.

For further information regarding our guarantee, please visit [Fredericia.com](https://www.fredericia.com).

DOWNLOADS

Download images, architect files at our partner portal on

www.fredericia.com

SURFACES & COLOURS

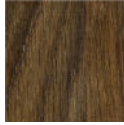
WOOD



BLACK
LACQUERED,
FSC MIX 70%



OAK
LACQUERED,
FSC MIX 70%



SMOKED OAK
STAINED
LACQ. FSC

RECOMMENDED UPHOLSTERY

Fabric group 0	Connect
Fabric group 1	Grand Linen, Linara, Bardal, Capture, Remix, Re-wool, Ruskin, Natural Linen
Fabric group 2	Hallingdal, Harald, Savoy, Clay, Barnum, Sunniva, Steelcut Trio, Fiord, Foss, Loop
Fabric group 3	Vidar, Divina Melange, Cotil, Elle
Fabric group 4	Sisu, Safire, Grand Mohair
Fabric group 5	Gentle
Leather group 0	Leather group 0 Vice
Leather group 1	Leather group 1 Omni
Leather group 2	Leather group 2 Primo/Trace
Leather group 3	Leather group 3 Max
Leather group 4	Leather group 4 Cera/Vegeta/Organic/Nubuck