

## The Hunting Chair

Designed By Børge Mogensen, 1950

The Hunting Chair is one of Børge Mogensen's most eye-catching chairs, designed in 1950. Seen from the side, what's most notable about the chair is the sharp diagonal slope from the edge of the front seat measuring only 30 cm above the floor. Being a true statement piece, the Hunting Chair is globally recognised for its dynamic expression and strong materiality.

### MODEL

2229 - Lounge chair

### MATERIALS

Lounge chair of solid wood and saddle leather. Interchangeable seat and back made in vegetable tanned saddle leather with metal buckles. Leather seat has canvas backing. Saddle straps can be tightened as the leather expands through use.

### COUNTRY OF ORIGIN

DK

### TEST & CERTIFICATES

EN 1022:2005, EN 16139:2013 (L1)



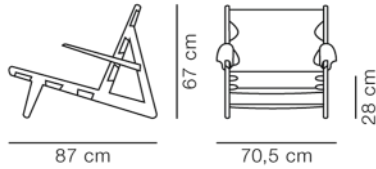
### ESSENTIAL ASSORTMENT

#### UPHOLSTERY

#### WOOD

Leather, black	Oak black lacquered
Leather, natural	Oak soap
Leather, cognac	Oak light oil
Leather, black	Smoked oak, oiled

## DIMENSIONS



Weight: 10,5 kg

## PACKAGING INFORMATION

L: 74 cm, W: 88 cm, H: 74 cm,

Cbm: 0,45m<sup>3</sup>

13 kg

## CARE & MAINTENANCE

Our Care & Maintenance offers guidance for best maintenance of our furniture. It includes advice and instructions on cleaning and caring for specific materials to ensure a long life of your furniture. Find your product on our product site and navigate to the Product Care menu:

[Link to Cleaning & Maintenance](#)

## SUSTAINABILITY

Fredericia's furniture is intended to be passed on from generation to generation. The core values of good design are rooted in the sense of responsibility and use of natural materials, ethical methods of production and respect for the people using our furniture every day.

Transparency, sustainability, and circularity are essential, and with a growing number of certifications and ambitious initiatives, Fredericia takes pride in continuously improving its performance while facilitating sustainable customer choices. Download our Sustainability report, Fredericia for People & Planet, here:

[Fredericia for People & Planet](#)

Environmental Product Sheet available here: [Link to EPS](#)

## WARRANTY

Fredericia Furniture A/S offers a 7-year guarantee against manufacturing defects in standard products (materials and construction). The warranty does not cover wear and damage to covers, surface treatment, inappropriate use and the like.

For further information regarding our guarantee, please visit [Fredericia.com](http://Fredericia.com).

## DOWNLOADS

Download images, architect files at our partner portal on

[www.fredericia.com](http://www.fredericia.com)

SURFACES & COLOURS

WOOD



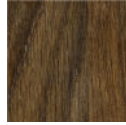
OAK BLACK  
LACQUERED



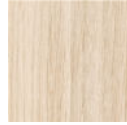
OAK LIGHT  
OIL



OAK OIL



OAK SMOKED  
AND OILED



OAK SOAP