

Post Table

Designed By Cecilie Manz, 2019

Post Table is a solid oak dining or meeting table expressed in the contemporary design ethos of Danish designer Cecilie Manz. The robust table top is made lighter by subtle edge detailing and soft corners inviting to be touched. The robust frame construction exposes the materials solid wood ends, with a powerful expression that enhances subtle details from the lighter Post Chair.



MODEL

6438 - 225x100 cm

MATERIALS

Legs and table top in solid wood. Knock-down, delivered unassembled.

COUNTRY OF ORIGIN

HR

TEST & CERTIFICATES

FSC® certified

EN 15372:2016 (L2)

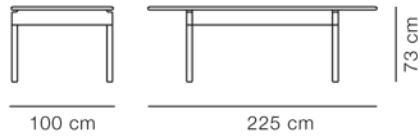
ESSENTIAL ASSORTMENT

WOOD

Oak light oil, FSC Mix 70%

Smoked oak, oiled, FSC Mix 70%

DIMENSIONS



Weight: 71,5 kg

PACKAGING INFORMATION

L: 108/234 cm, W: 79/108 cm, H: 15/11 cm,

Cbm: 0,41m³

80 kg

CARE & MAINTENANCE

Our Care & Maintenance offers guidance for best maintenance of our furniture. It includes advice and instructions on cleaning and caring for specific materials to ensure a long life of your furniture. Find your product on our product site and navigate to the Product Care menu:

[Link to Cleaning & Maintenance](#)

SUSTAINABILITY

Fredericia's furniture is intended to be passed on from generation to generation. The core values of good design are rooted in the sense of responsibility and use of natural materials, ethical methods of production and respect for the people using our furniture every day.

Transparency, sustainability, and circularity are essential, and with a growing number of certifications and ambitious initiatives, Fredericia takes pride in continuously improving its performance while facilitating sustainable customer choices. Download our Sustainability report, Fredericia for People & Planet, here:

[Fredericia for People & Planet](#)

WARRANTY

Fredericia Furniture A/S offers a 7-year guarantee against manufacturing defects in standard products (materials and construction). The warranty does not cover wear and damage to covers, surface treatment, inappropriate use and the like.

For further information regarding our guarantee, please visit [Fredericia.com](#).

DOWNLOADS

Download images, architect files at our partner portal on [www.fredericia.com](#)

SURFACES & COLOURS

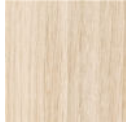
WOOD



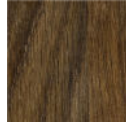
OAK
LACQUERED,
FSC MIX 70%



OAK LIGHT
OIL, FSC MIX
70%



OAK SOAP,
FSC MIX 70%



SMOKED
OAK, OILED,
FSC MIX 70%